

DRAWING NUMBER
8437

REGORDER BY NUMBER 07048
PLANNING CORPORATION • IRVINE, CALIFORNIA
POSITION EDGE OF POINT ON THE LINE

DRAWING NUMBER
8437

REGORDER BY NUMBER 07048
PLANNING CORPORATION • IRVINE, CALIFORNIA
POSITION EDGE OF POINT ON THE LINE

8437
8-1-90

COURSE	BEARING	DISTANCE
1-2	S 79°07'46"E (S 79°09'E)	114.95' (115.00)
2-3	S 13°14'00"E (S 13°14'E)	137.51' (137.46)
3-4	S 62°55'00"E (S 62°55'E)	65.48'

LEGEND

-Found monument: 1/2" (1D) pipe unless otherwise noted.
-Set monument: 5/8", x 30" rebar with red plastic cap stamped "NORTHSTAR PLS 1823."
- ().....Record data from CS 5285.
- [].....Record data from CS 5185.
- { }.....Record data from CS 5410.
- *.....Calculated to compute closed figure.

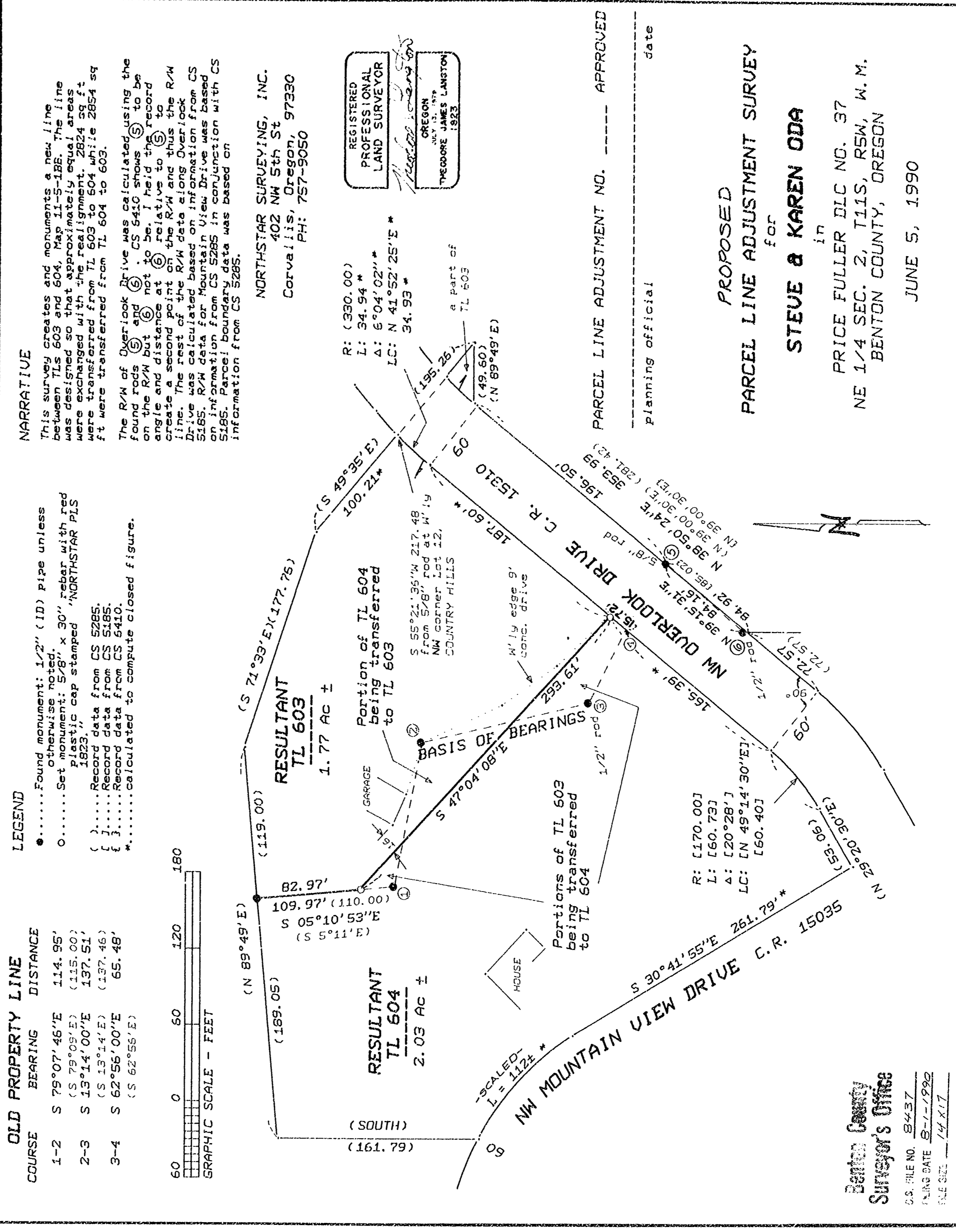
NARRATIVE

This survey creates and monuments a new line between Tls 603 and 604, Map 11-5-18B. The line was designed so that approximately equal areas were exchanged with the realignment. 2824 sq ft were transferred from TL 603 to 604 while 2854 sq ft were transferred from TL 604 to 603.

The R/W of Overlook Drive was calculated using the found rods (5) and (6). CS 5410 shows (5) to be on the R/W but (6) not to be. I held the record angle and distance at (6) relative to (5) to create a second point on the R/W and thus the R/W line. The rest of the R/W data along Overlook Drive was calculated based on information from CS 5185. R/W data for Mountain View Drive was based on information from CS 5285 in conjunction with CS 5185. Parcel boundary data was based on information from CS 5285.

NORTHSTAR SURVEYING, INC.
402 NW 5th St
Corvallis, Oregon, 97330
PH: 757-9050

REGISTERED
PROFESSIONAL
LAND SURVEYOR
James Langston
OREGON
JULY 12, 1979
THEODORE JAMES LANGSTON
1923



PARCEL LINE ADJUSTMENT NO. ----- APPROVED

planning official _____ date _____

PROPOSED
PARCEL LINE ADJUSTMENT SURVEY

for

STEVE & KAREN ODA

in

PRICE FULLER DLC NO. 37
NE 1/4 SEC. 2, T11S, R5W, W.M.
BENTON COUNTY, OREGON

JUNE 5, 1990

Benton County
Surveyor's Office

C.S. FILE NO. 8437
FILING DATE 8-1-1990
FILE SEE -14 X17