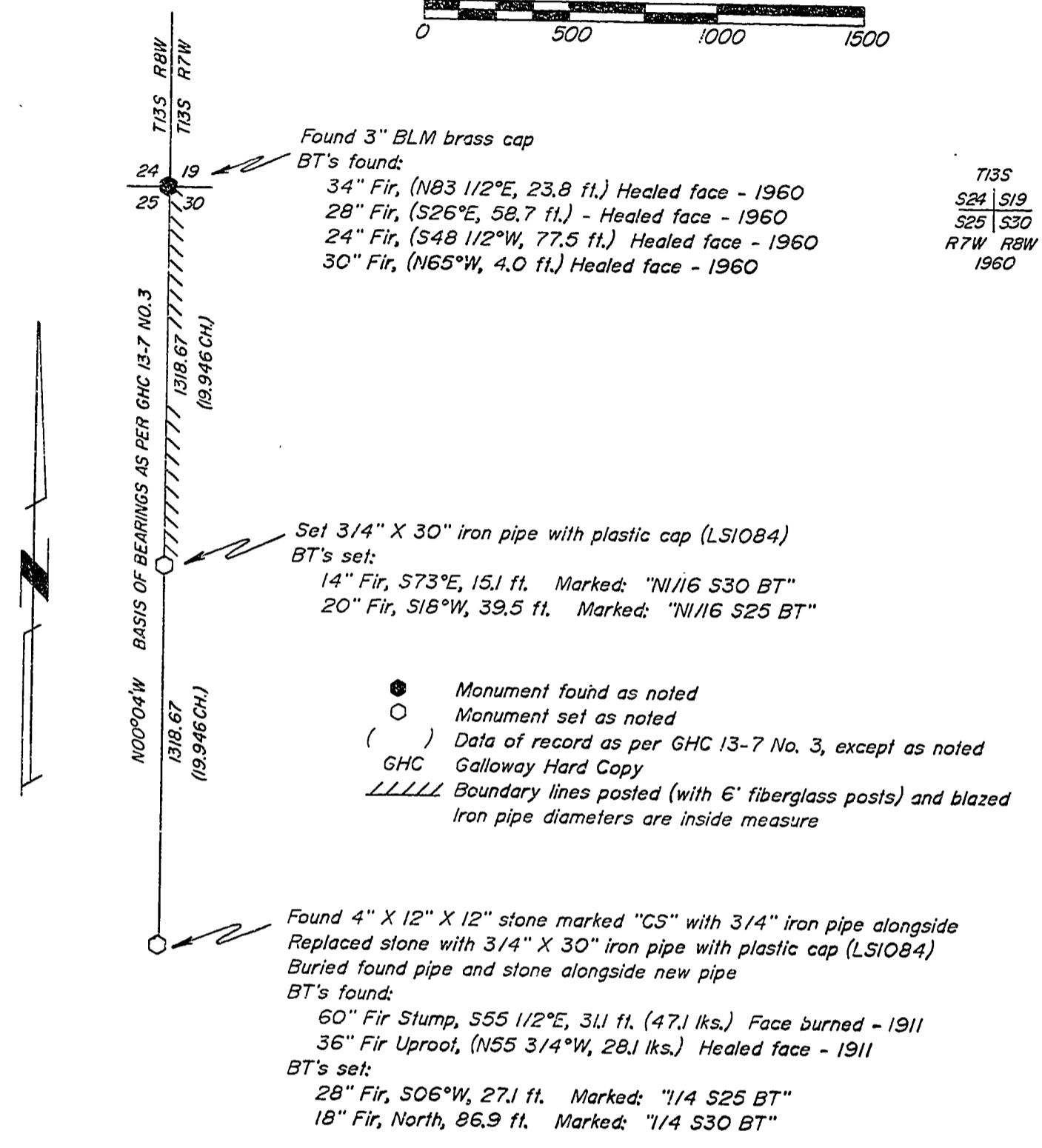
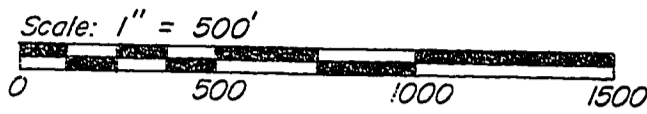


Benton County
Surveyor's Office

C.S. FILE NO. 8473
 FILING DATE 12-11-1990
 FILE SIZE 8 1/2 X 13 1/2

RECORD OF SURVEY
 for STARKER FORESTS, INC.
 in the NW1/4 SECTION 30, T13S, R7W, W.M.
 BENTON COUNTY, OREGON
 DECEMBER 3, 1990

3473
 12-11-90



Found 3" BLM brass cap
 BT's found:
 34" Fir, (N83 1/2°E, 23.8 ft.) Healed face - 1960
 28" Fir, (S26°E, 58.7 ft.) - Healed face - 1960
 24" Fir, (S48 1/2°W, 77.5 ft.) Healed face - 1960
 30" Fir, (N65°W, 4.0 ft.) Healed face - 1960

T13S
 S24 S19
 S25 S30
 R7W R8W
 1960

Set 3/4" X 30" iron pipe with plastic cap (LS1084)
 BT's set:
 14" Fir, S73°E, 15.1 ft. Marked: "N1/16 S30 BT"
 20" Fir, S16°W, 39.5 ft. Marked: "N1/16 S25 BT"

- Monument found as noted
- Monument set as noted
- () Data of record as per GHC 13-7 No. 3, except as noted
- GHC Galloway Hard Copy
- ////// Boundary lines posted (with 6' fiberglass posts) and blazed
 Iron pipe diameters are inside measure

Found 4" X 12" X 12" stone marked "CS" with 3/4" iron pipe alongside
 Replaced stone with 3/4" X 30" iron pipe with plastic cap (LS1084)
 Buried found pipe and stone alongside new pipe
 BT's found:
 60" Fir Stump, S55 1/2°E, 31.1 ft. (47.1 lks.) Face burned - 1911
 36" Fir Uproot, (N55 3/4°W, 28.1 lks.) Healed face - 1911
 BT's set:
 28" Fir, S06°W, 27.1 ft. Marked: "1/4 S25 BT"
 18" Fir, North, 86.9 ft. Marked: "1/4 S30 BT"

Surveyed by:
 Peterson & Associates
 8155 NW Mitchel Drive
 Corvallis, Oregon 97330
 Phone: 757-1794

REGISTERED
 PROFESSIONAL
 LAND SURVEYOR

OREGON
 JIM S. PETERSON
 1084

NARRATIVE
 The purpose of this survey is to reestablish the N1/16 corner between Sections 25 and 30. (The N1/16 corner as established by GHC 13-7 No. 3 has been destroyed by road construction and logging.) The indicated boundary lines were also marked as noted.
 A system of closed traverses, using a Topcon GTS-2, was used to perform this survey.

