

DRAWING NUMBER  
**8491**

PLAN HOLD CORPORATION • IRVINE, CALIFORNIA  
RECORDS BY NUMBER 07344  
NATIONAL CODE OF PRACTICE ON THIS LINE

DRAWING NUMBER

PLAN HOLD CORPORATION • IRVINE, CALIFORNIA  
RECORDS BY NUMBER 07344  
NATIONAL CODE OF PRACTICE ON THIS LINE

DRAWING NUMBER

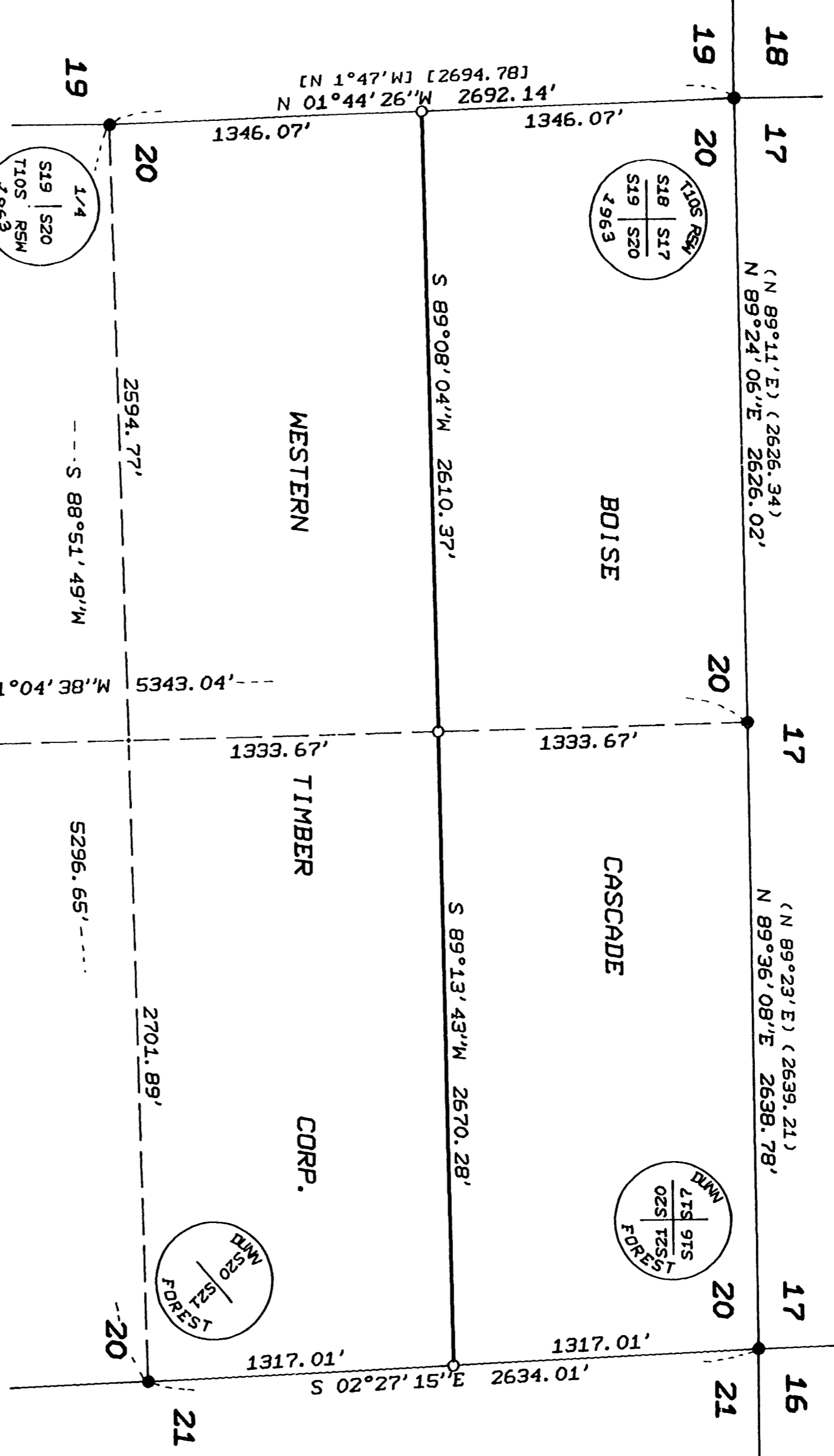
PLAN HOLD CORPORATION • IRVINE, CALIFORNIA  
RECORDS BY NUMBER 07344  
NATIONAL CODE OF PRACTICE ON THIS LINE

DRAWING NUMBER  
**8491**

PLAN HOLD CORPORATION • IRVINE, CALIFORNIA  
RECORDS BY NUMBER 07344  
NATIONAL CODE OF PRACTICE ON THIS LINE  
3-4-1991

Benton County  
Surveyor's Office

C.S. FILE NO. 8491  
FILING DATE 3-4-1991  
FILE SIZE 18X24



**NORTHSTAR SURVEYING, INC.**  
402 N.W. 5th Street  
Corvallis, Oregon 97330  
Phone: 503-757-9050

REGISTERED  
PROFESSIONAL  
LAND SURVEYOR  
*Richard J. Langston*  
OREGON  
JULY 13, 1978  
THEODORE JAMES LAWTON  
1823

**RECORD OF SURVEY**

for  
**MTD INDUSTRIES, INC.**

in  
N 1/2 SEC 20, T 10 S, R 5 W, W.M.  
BENTON COUNTY, OREGON  
FEBRUARY 5, 1991

**LEGEND**

- Found monument as noted in CORNER DATA.
  - Set monument: S 87° x 30" rebar with red plastic cap stamped "NORTHSTAR PLS 1823".
  - ( ) Record data from Hardcopy Survey 10-5 #6.
  - [ ] " " " 1963 BLM survey plat.
- NOTE: Cap diagrams show actual field orientation with respect to true north.

**BEARINGS BASED ON SOLAR OBSERVATION**

taken N65W 66.4 ft from corner C1/4

**CORNER DATA**

**1/4 CORNER SECTIONS 19 & 20**  
3-1/4" BLM brass cap on 2" pipe. Monument lies at SE corner of tree stand.  
BTS found (per 1963 BLM survey):  
24" Fir snag-original GLO BT, (N 85°E, 9.90 ft.), open face w/ scribbling.  
18" Fir stump (12" Fir), (N 50°30'E (N 50°30'E), (50.16 ft.).  
16" Fir (13"), (N 63°30'W, 33.99 ft.), healed face.

**1/16 CORNER SECTIONS 19 & 20**  
Set 5/8" x 30" rebar with red plastic cap stamped "NORTHSTAR PLS 1823", = No monument. Corner lies on E-slope 40 ft west of clear cut.  
BTS set:  
14" D. Fir, N 49°E, 19.1 ft., scribed "N1/16S20" above "BT".  
24" D. Fir, N 26°W, 21.1 ft., scribed "N1/16S19" above "BT".

**CORNER SECTIONS 17, 18, 19 & 20**  
3-1/4" BLM brass cap on 2" pipe. Monument is at corner of fences south and west.  
BTS found (per BCCRF #210):  
24" Fir stump, (S 32°E, 13.99 ft.).  
Other BTS gone.

**1/4 CORNER SECTIONS 17 & 20**  
5/8" (1" D.) x 36" pipe, bent but base good. We straightened it. Monument lies 170 ft east of road.  
BTS found (per BCCRF #209):  
45" Plowdown Fir stump (12" Fir), (N 35°W, 62.04 ft.), face scar.  
67" Fir stump (60" Fir), N 5°W (N 8°20'W, 69.63 ft.).  
31" Fir stump-N 1/4 of 2 stumps (26" Fir), S 38°30'E (S 41°E), (10.63 ft.), face scar.

**CORNER SECTIONS 16, 17, 20 & 21**  
2-1/2" brass cap on 3/4" pipe. Corner lies 650 ft NW of Road #130.  
BTS found (per BCCRF #204):  
30" Fir stump (10" Fir), N 41°W (N 41°W), (105.60 ft.).  
12" windfall Oak (10" W. Oak), S 61°W (S 55°W), (75.90 ft.).  
Rotted Fir remains (15" Fir), (S 41°E, 116.16 ft.).  
Additional BT found:  
34" Maple, N 52°E, 5.0 ft., cruiser marks.

**N 1/16 CORNER SECTIONS 20 & 21**  
Set No monument. Corner lies on N slope 275 ft NW of Road #130.  
BTS set:  
8" D. Fir, S 87°E, 13.8 ft., scribed "N1/16S21" above "BT".  
12" D. Fir, S 17°W, 19.4 ft., scribed "N1/16S20" above "BT".

**1/4 CORNER SECTIONS 20 & 21**  
2-1/2" brass cap on 3/4" pipe. Corner lies 80 ft NW of Road #130.  
A white 4x4 post stands nearby with a 1/2" pipe alongside it.  
BTS found (per BCCRF #205):  
12" D. Fir, N 70°W, 2.8 ft (4.62 ft.), no marks.  
Fir at S 70°W, 5.94 ft is gone.  
Additional BT found:  
12" D. Fir, S 50°W, 20.8 ft., face scar.

**1/4 CORNER SECTIONS 20 & 29**  
3-1/4" BLM brass cap on 2" pipe. Corner lies 6 ft S of centerline of dirt road & 200 ft NE of Maxwell Creek.  
BTS found (per 1963 BLM survey):  
33" Fir stump-original GLO BT, (N 22°E, 33.66 ft.), open face with scribbling.  
43" Fir stump-original GLO BT, (S 45°W, 13.20 ft.).  
16" Fir stump (5" Fir), (N 10°30'W, 19.14 ft.), healed face.  
18" Fir stump (4" Fir), (S 56°E, 9.90 ft.), healed face.

**CENTER NORTH 1/16 CORNER SECTION 20**  
Set No monument.  
BTS set:  
8" Maple, S 78°E, 17.5 ft., bark scribed "C1/16S20BT", "BT".  
7" D. Fir, N 35°W, 13.3 ft., scribed "C1/16S20" above "BT".

NOTE: BT measurements are to center of tree using declination = 20° E.

**NARRATIVE**

The purpose of this survey was to subdivide the north half of Section 20. Monuments of record were found and tied at all 4 quarter corners as well as the NE and NW corners of the Section. The Section was subdivided according to the 1973 "Manual of Surveying Instructions". The north 1/16th corners on the east and west Section lines were computed and set as well as the center-north 1/16th corner. I held the monument at the E 1/4, even though the current monument tree seemed to be off. There was no evidence that the current monument had been disturbed. The current monument had been set in 1967, replacing the 1/2" pipe set by Galloway in 1953. Both Galloway and the O.S.U. restorations showed that the 1/2" pipe bearing trees.