

DRAWING NUMBER
8519

PLAN HOLD CORPORATION • IRVINE, CALIFORNIA
REORDER BY NUMBER 075AR
POSITION EDGE OF PRINT ON THIS LINE

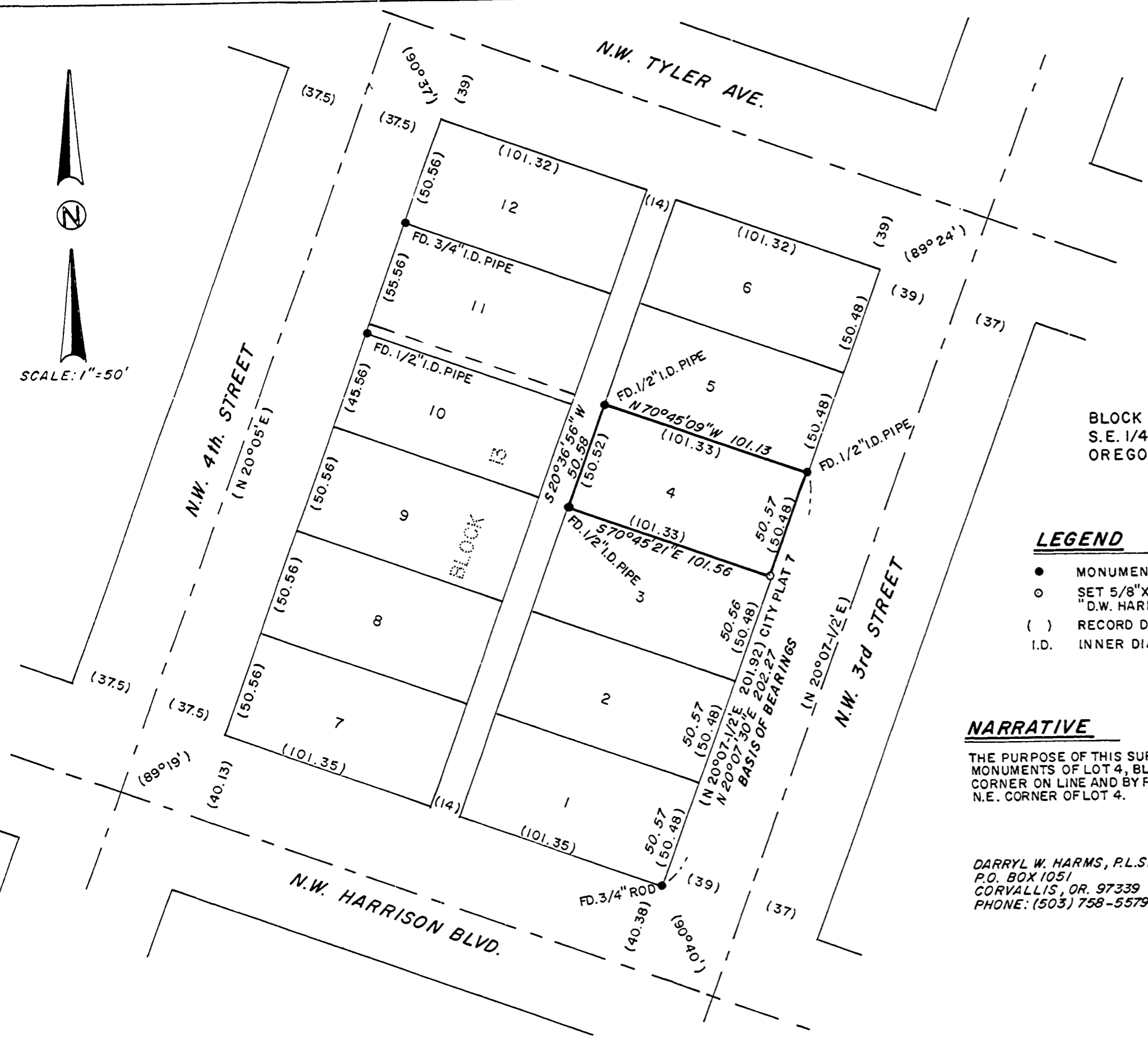
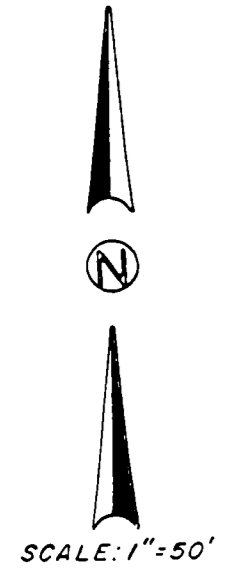
DRAWING NUMBER
8519

PLAN HOLD CORPORATION • IRVINE, CALIFORNIA
REORDER BY NUMBER 075AR
POSITION EDGE OF PRINT ON THIS LINE

8519
5-22-91

**Benton County
Surveyor's Office**

C.S. FILE NO. 8519
FILING DATE 5-22-1991
FILE SIZE 11x17



MAP OF SURVEY
for:
JIM EDWARDS
MAY 14, 1991

BLOCK 13, DIXON'S 2nd ADDITION, WM. F. DIXON D.L.C. No. 50,
S.E. 1/4 SECTION 35, T.11 S., R. 5 W., W.M., BENTON COUNTY,
OREGON.

LEGEND

- MONUMENT FOUND, TYPE NOTED
- SET 5/8" X 30" IRON ROD WITH YELLOW PLASTIC CAP STAMPED "D.W. HARMS, P.L.S. 1079"
- () RECORD DATA PER CITY PLAT No. 7
- I.D. INNER DIAMETER

NARRATIVE

THE PURPOSE OF THIS SURVEY IS TO LOCATE EXISTING AND REPLACE MISSING CORNER MONUMENTS OF LOT 4, BLOCK 13, DIXON'S 2nd ADDITION. I REPLACED THE SOUTHEAST CORNER ON LINE AND BY PROPORTION BETWEEN THE S.E. CORNER OF LOT 1 AND THE N.E. CORNER OF LOT 4.

DARRYL W. HARMS, P.L.S.
P.O. BOX 1051
CORVALLIS, OR. 97339
PHONE: (503) 758-5579

REGISTERED
PROFESSIONAL
LAND SURVEYOR

Darryl W. Harms

OREGON
JULY 30, 1979
DARRYL W. HARMS
1079