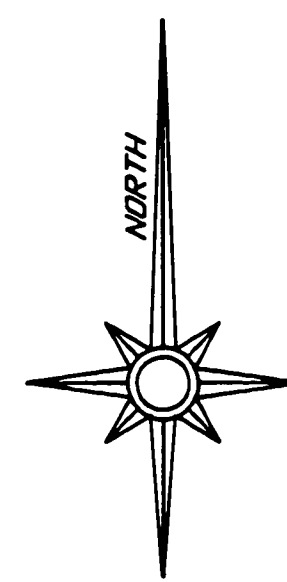
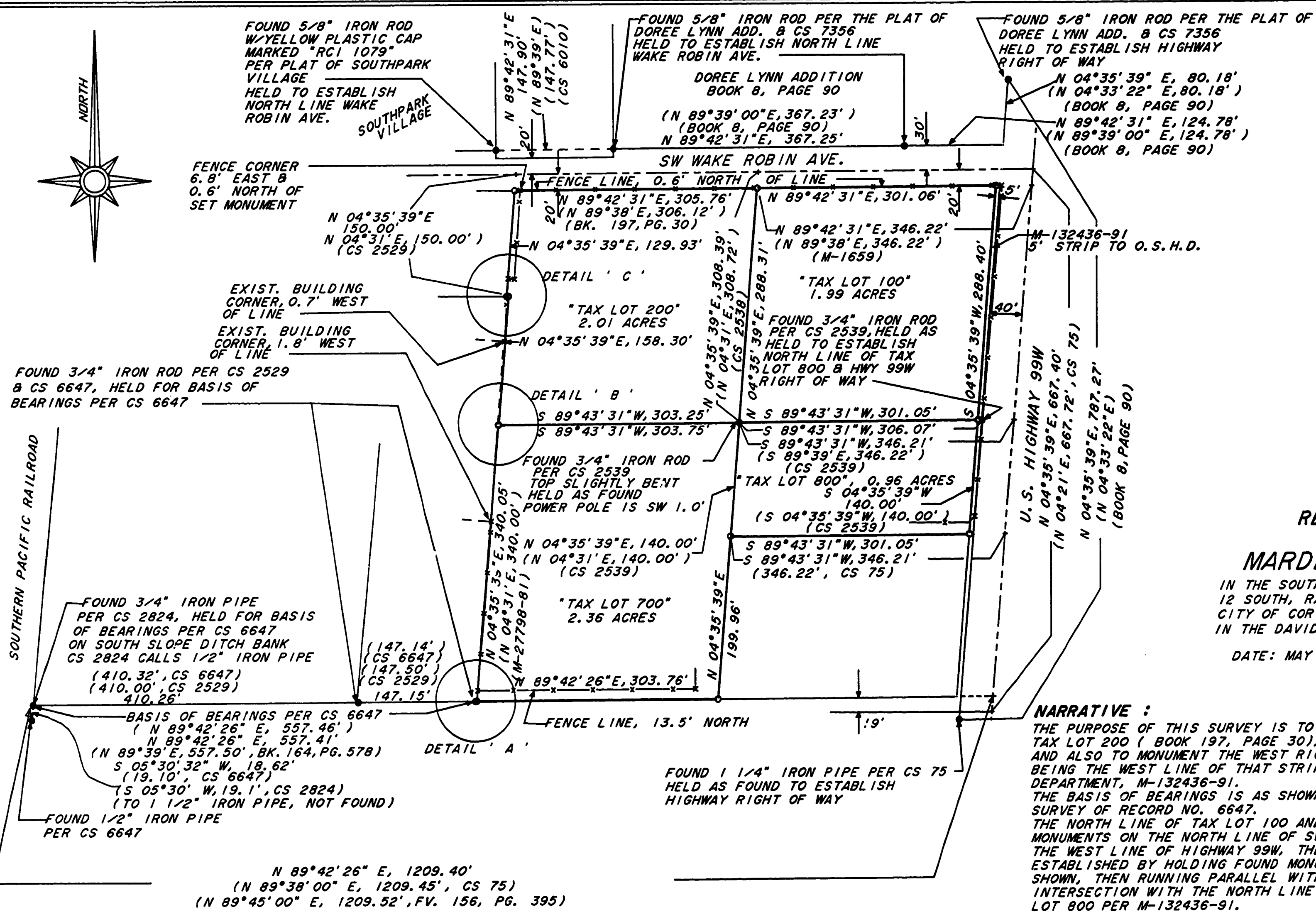


8520
5-24-91



**Benton County
Surveyor's Office**

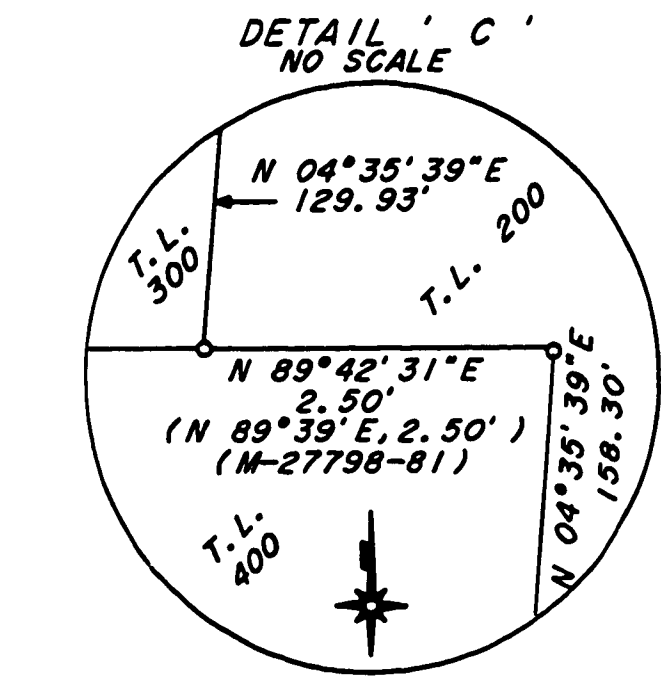
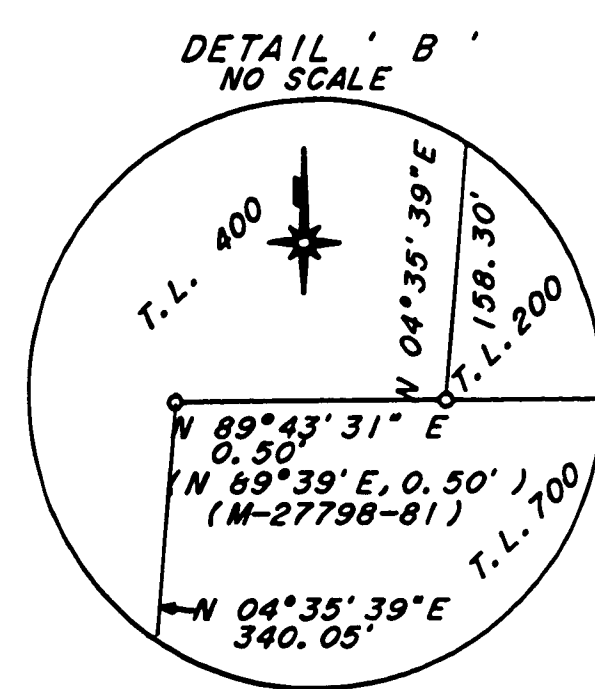
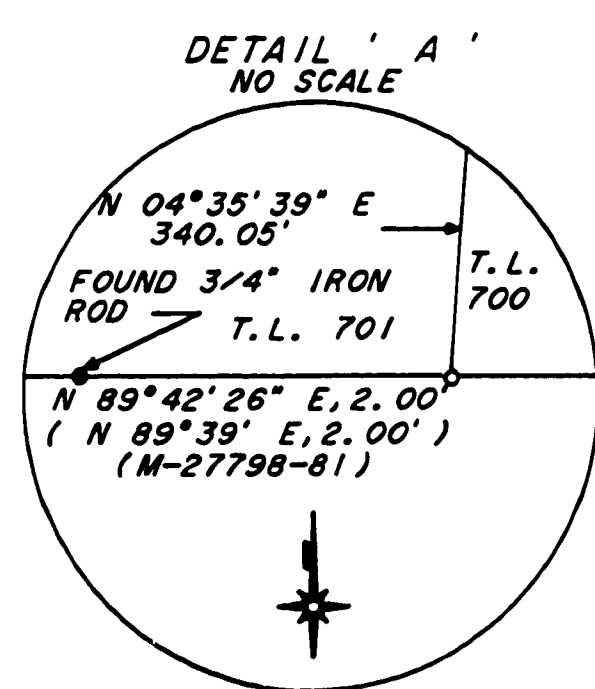
C.S. FILE NO. 8520
FILING DATE 5-24-1991
FILE SIZE 18x24



RECORD OF SURVEY
for
MARDELLA R. FINSTAD
IN THE SOUTHWEST 1/4 OF SECTION 11, TOWNSHIP
12 SOUTH, RANGE 5 WEST, WILLAMETTE MERIDIAN,
CITY OF CORVALLIS, BENTON COUNTY, OREGON.
IN THE DAVID BUTTERFIELD DONATION LAND CLAIM NO. 47.

DATE: MAY 15, 1991 SCALE: 1" = 100'

NARRATIVE :
THE PURPOSE OF THIS SURVEY IS TO LOCATE AND MONUMENT TAX LOT 100 (M-1659), TAX LOT 200 (BOOK 197, PAGE 30), TAX LOT 700 AND 800 (BOOK 164, PAGE 578) AND ALSO TO MONUMENT THE WEST RIGHT OF WAY LINE OF HIGHWAY 99W. THIS LINE BEING THE WEST LINE OF THAT STRIP OF LAND DEEDED TO THE OREGON STATE HIGHWAY DEPARTMENT, M-132436-91.
THE BASIS OF BEARINGS IS AS SHOWN BETWEEN FOUND MONUMENTS AS PER COUNTY SURVEY OF RECORD NO. 6647.
THE NORTH LINE OF TAX LOT 100 AND 200 WERE ESTABLISHED BY HOLDING FOUND MONUMENTS ON THE NORTH LINE OF SW WAKE ROBIN AVENUE, AS SHOWN.
THE WEST LINE OF HIGHWAY 99W, THE EAST LINE OF TAX LOTS 100 AND 800, WAS ESTABLISHED BY HOLDING FOUND MONUMENTS ON THE OLD RIGHT OF WAY LINE, AS SHOWN, THEN RUNNING PARALLEL WITH AND 5.00 WEST OF THIS LINE TO THE INTERSECTION WITH THE NORTH LINE OF TAX LOT 100 AND THE SOUTH LINE OF TAX LOT 800 PER M-132436-91.
THE SOUTH LINE OF TAX LOT 700 WAS ESTABLISHED BY HOLDING FOUND MONUMENTS, AS SHOWN. THE SOUTHWEST CORNER OF THIS TAX LOT WAS SET AS PER DEED CALLS, M-27798-81.
THE WEST LINE OF TAX LOTS 700 AND 200 WAS ESTABLISHED BY RUNNING DEED CALLS PER SAID M-27798-81.
THE EAST LINE OF TAX LOTS 200 AND 700 WAS ESTABLISHED BY RUNNING PARALLEL WITH HIGHWAY 99W, NORTHERLY AND SOUTHERLY FROM THE FOUND MONUMENT AT THE SOUTHEAST CORNER OF TAX LOT 200 TO INTERSECT WITH THE SOUTH LINE OF SW WAKE ROBIN AVENUE ON THE NORTH AND THE SOUTH LINE OF TAX LOT 700 ON THE SOUTH. THE SOUTH LINE OF TAX LOT 100 WAS ESTABLISHED BY HOLDING FOUND MONUMENTS, AS SHOWN. THE SOUTH LINE OF TAX LOT 200 WAS ESTABLISHED BY RUNNING THE EXTENSION OF THIS LINE TO INTERSECT WITH THE WEST LINE OF TAX LOT 700. THE SOUTH LINE OF TAX LOT 800 WAS ESTABLISHED PARALLEL WITH AND AT RECORD DISTANCE FROM THE NORTH LINE OF TAX LOT 800, AS SHOWN.



- LEGEND**
- FOUND MONUMENT AS NOTED AND SHOWN.
 - SET 5/8" x 30" IRON ROD W/YELLOW PLASTIC CAP MARKED " J TACCHINI PLS 2267 "
 - EXISTING FENCE LINES
- BOOK 8, PAGE 90 = DOREE LYNN ADDITION
ALL PIPE MONUMENTS FOUND ARE MEASURED INSIDE DIAMETER.

REGISTERED
PROFESSIONAL
LAND SURVEYOR
John P. Tacchini
OREGON
JOHN P. TACCHINI
JAN. 18, 1987
2267